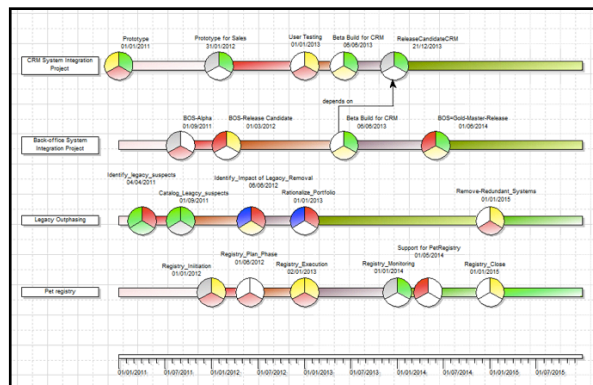




Roadmapping support for IBM Rational System Architect®

Roadmapping is a fundamental part of strategic planning and enterprise architecture. Roadmapping allows us to map out the set of actions that are required to move the business from where it is today, to where it wants to go. Those actions turn into plans. Our roadmapping capabilities allow organizations to tie strategy to deliverables using enterprise architecture. Roadmapping is crucial in allowing organizations to deliver on initiatives that have been prioritized.

We have extended the ArchiMate® 2.0 *Implementation and Migration Extension Metamodel* within our ArchiMate add-in for IBM Rational System Architect®. We now support both tool features and capabilities available in IBM Rational System Architect® and additional concepts that we believe are necessary to do pragmatic roadmapping and transition planning.



With the Corso extensions, ArchiMate® 2.0 finally allows enterprise architects to model transition plans, work packages and time in a coherent manner.

The key capabilities of this solution are:

◆ **Timeline diagrams with milestones**

Our timeline diagram represents milestones and dimensions. The timeline diagram is automatically created based on underlying data and can be varied according to time.

◆ **Work Package support**

We provide work package definitions to allow users to specify actions in a time box for enterprise architecture artefacts. Architects can group their work into specific actions and track them.

◆ **Lifecycle support**

Lifecycles allow users to specify the state of an artefact at any moment in time. The lifecycle can conform to standard states such as application portfolio management.

◆ **Analytics and Heatmaps**

Heatmaps allow users to automatically color code enterprise architecture symbols based on time and lifecycle status. Consumers of enterprise architecture can automatically visualize the state of the Business and IT infrastructure at any time.

◆ **Enhanced support for Plateaus and Gaps**

Plateaus and gaps in enterprise architecture states are defined and integrated into System Architect tool capabilities such as workspaces. The architect can use the tool and the model in conjunction with each other for real gap analysis.

◆ **Roadmap reports**

Our reports allow you to document your architecture over time and see where the architecture and work packages are in current and future states.

◆ **Integrations with IBM Rational Focal Point**

Work packages and milestones can be exported into IBM Rational Focal Point for use in portfolio management and prioritization initiatives.

About Corso

Corso provides a range of innovative products and services in support of strategic planning initiatives. We provide guidance and best practice in demand management, enterprise architecture and IT planning.

Corso offers a range of consulting services designed to help an organization deliver value from their Enterprise Architecture, Strategic Planning or Business Process project. Corso is an IBM partner and provides tools and services in conjunction with IBM Rational products and numerous other vendors.



About Corso Frameworks

Corso Frameworks is a collection of toolkits that provide capabilities and out of the box content for existing Enterprise Architecture tools on the market. Our toolkits are unique and provide support for industry standards and notations with full support, upgrades and help.

We include our popular method-wizard, which works interactively with your chosen EA tool to allow you to use your tool in a quick and easy manner, thereby allowing you to populate model content extremely quickly and efficiently.

North America

+1 646-290-5414

www.corso.us

Australia

+61 1300 916 617

www.corso.net.au

Europe

+44 01926 333920

www.corso.co.uk

